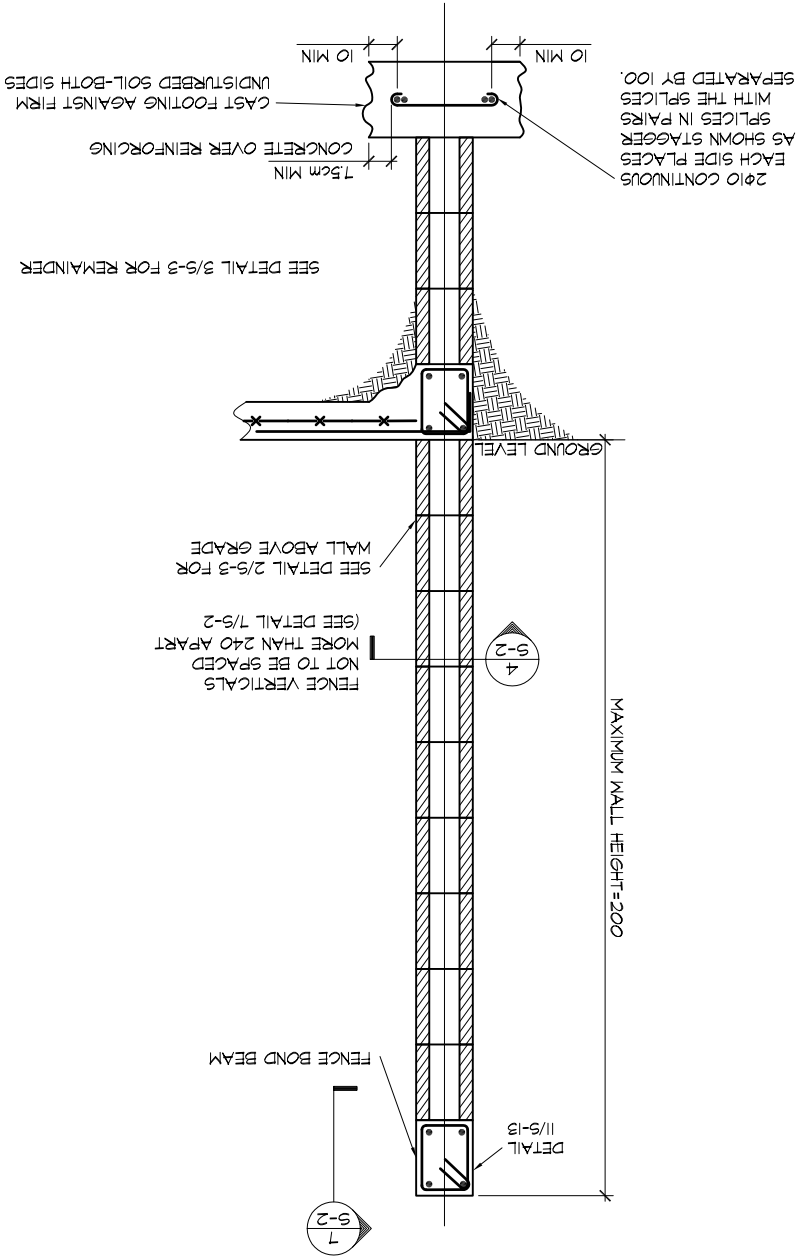
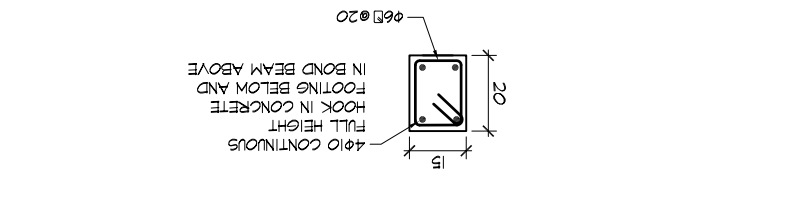


NOTE:
ALL DIMENSIONS ARE IN CENTIMETERS UNLESS OTHERWISE SPECIFIED. ALL REINFORCING BAR DIAMETERS ARE IN MILLIMETERS.

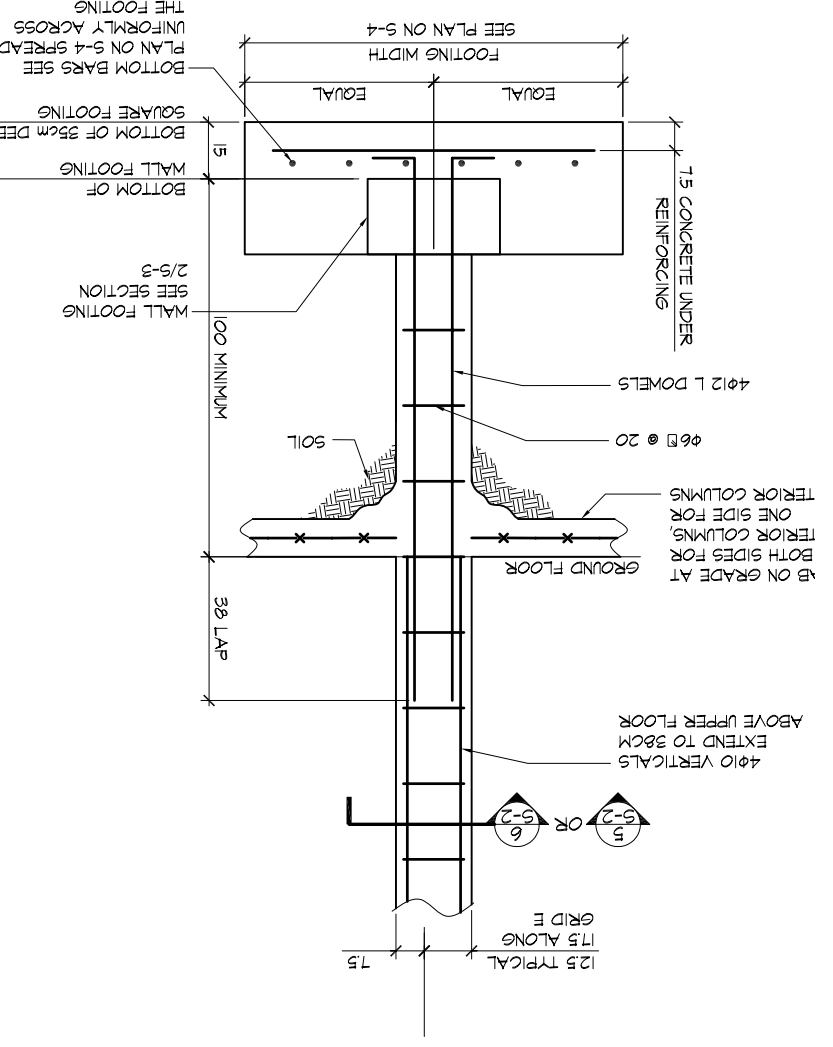
1 TYPICAL FENCE SECTION 1:20



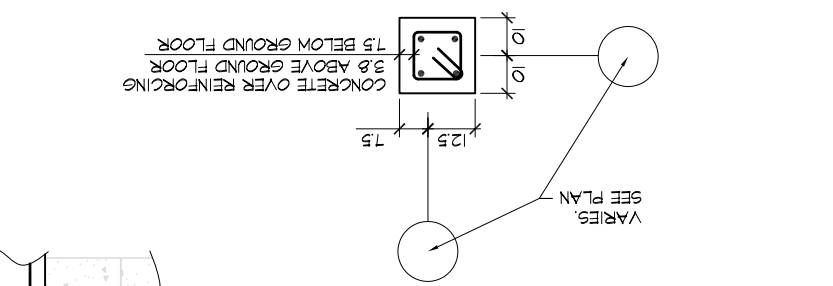
4 TYPICAL FENCE VERTICAL 1:20



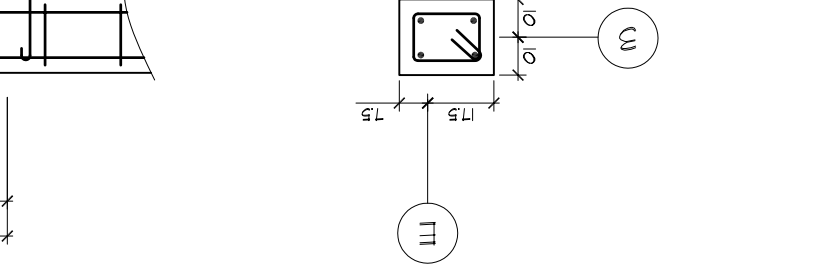
2 TYPICAL COLUMN FOOTING SECTION 1:20



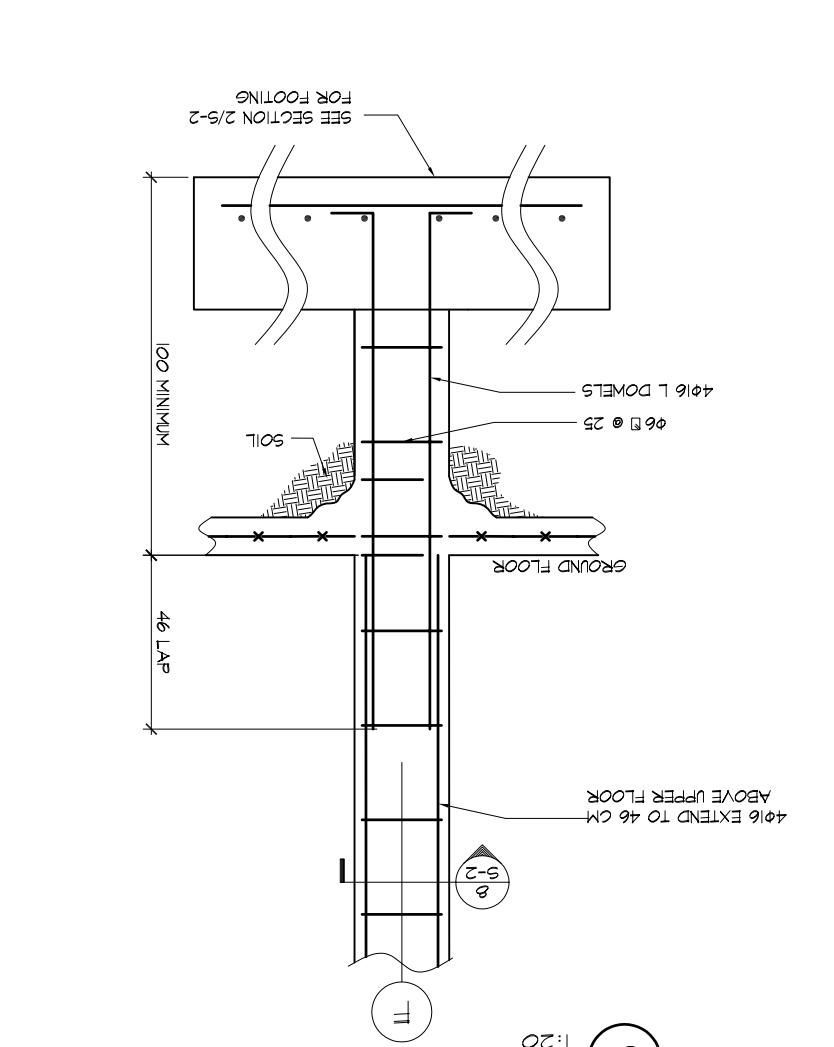
6 TYPICAL COLUMN 1:20



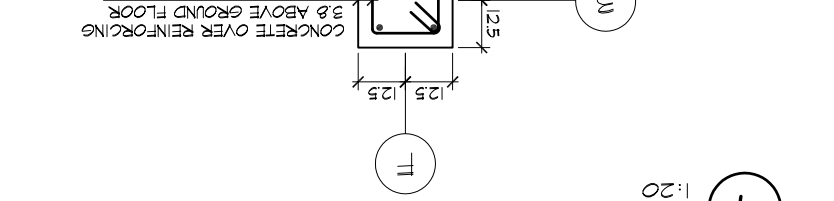
5 COLUMN AT E-3 1:20



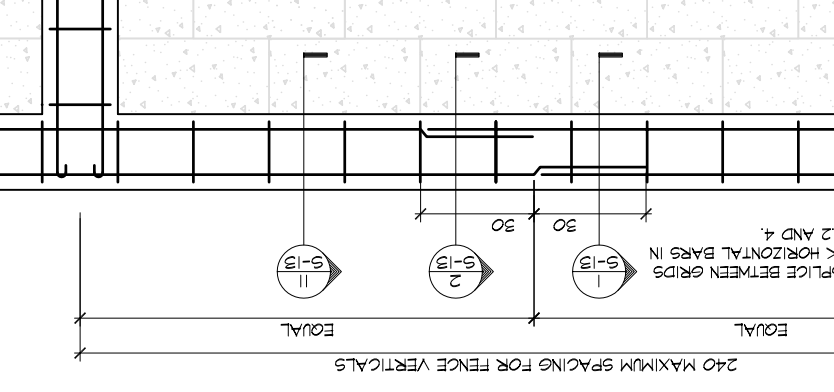
3 COLUMN FOOTING AT F-3 SECTION 1:20



8 COLUMN AT F-3 1:20



7 FENCE BOND BEAM 1:20



5-2 SHEET NUMBER
DATE ISSUED: DEC 2007
PROJECT: 5424
SCALE: 1:20
CM

THE LORD'S HOUSE - PASSY, SENEGAL
FOOTING SECTIONS &
FENCE DETAILS

GMI
... designing a world of hope
ENGINEERING MINISTRIES INTERNATIONAL
130 EAST KIOMA ST. STE 200 COLORADO SPRINGS CO 80903
PHONE: (719) 653-2078 FAX: (719) 653-2470 WWW.EMUSA.ORG