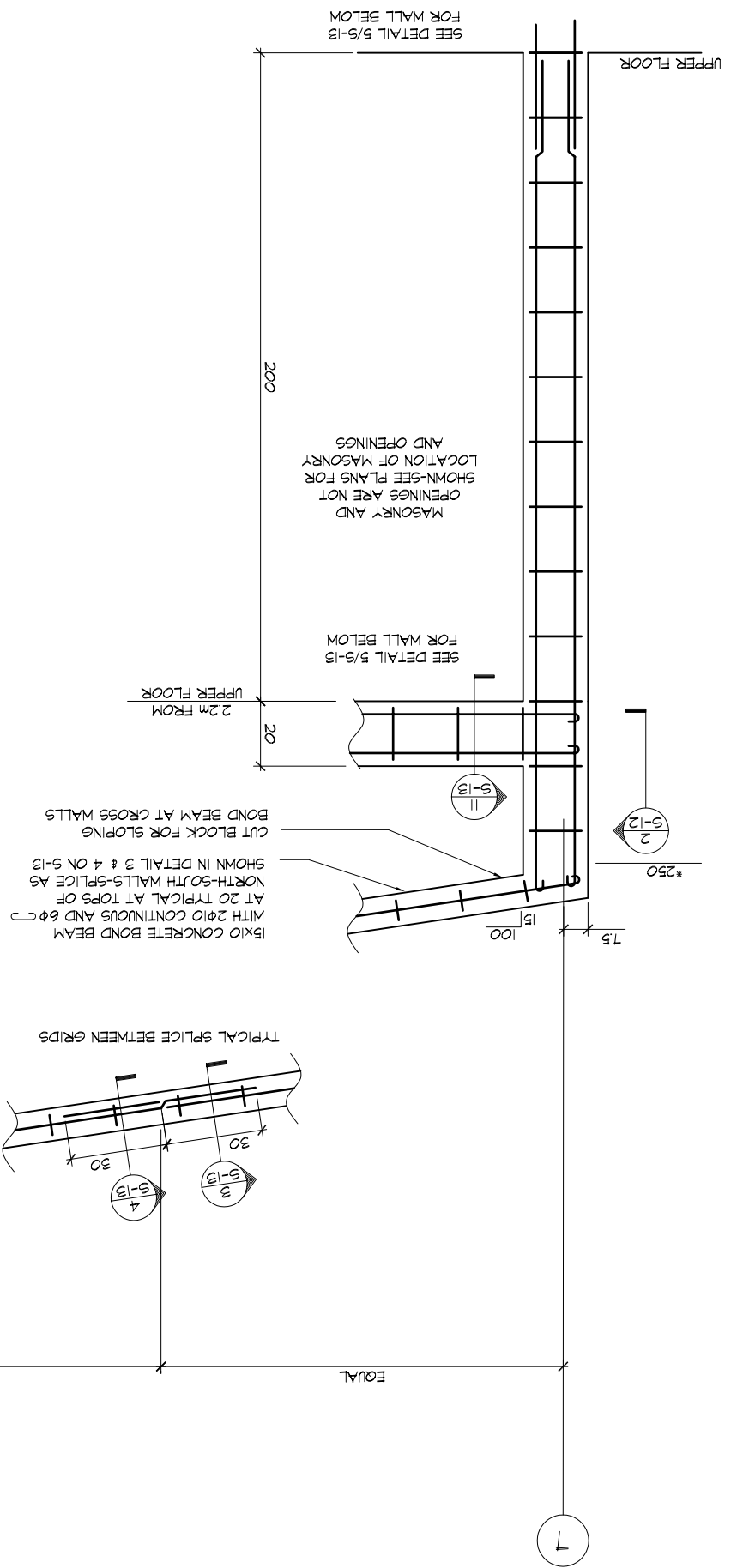
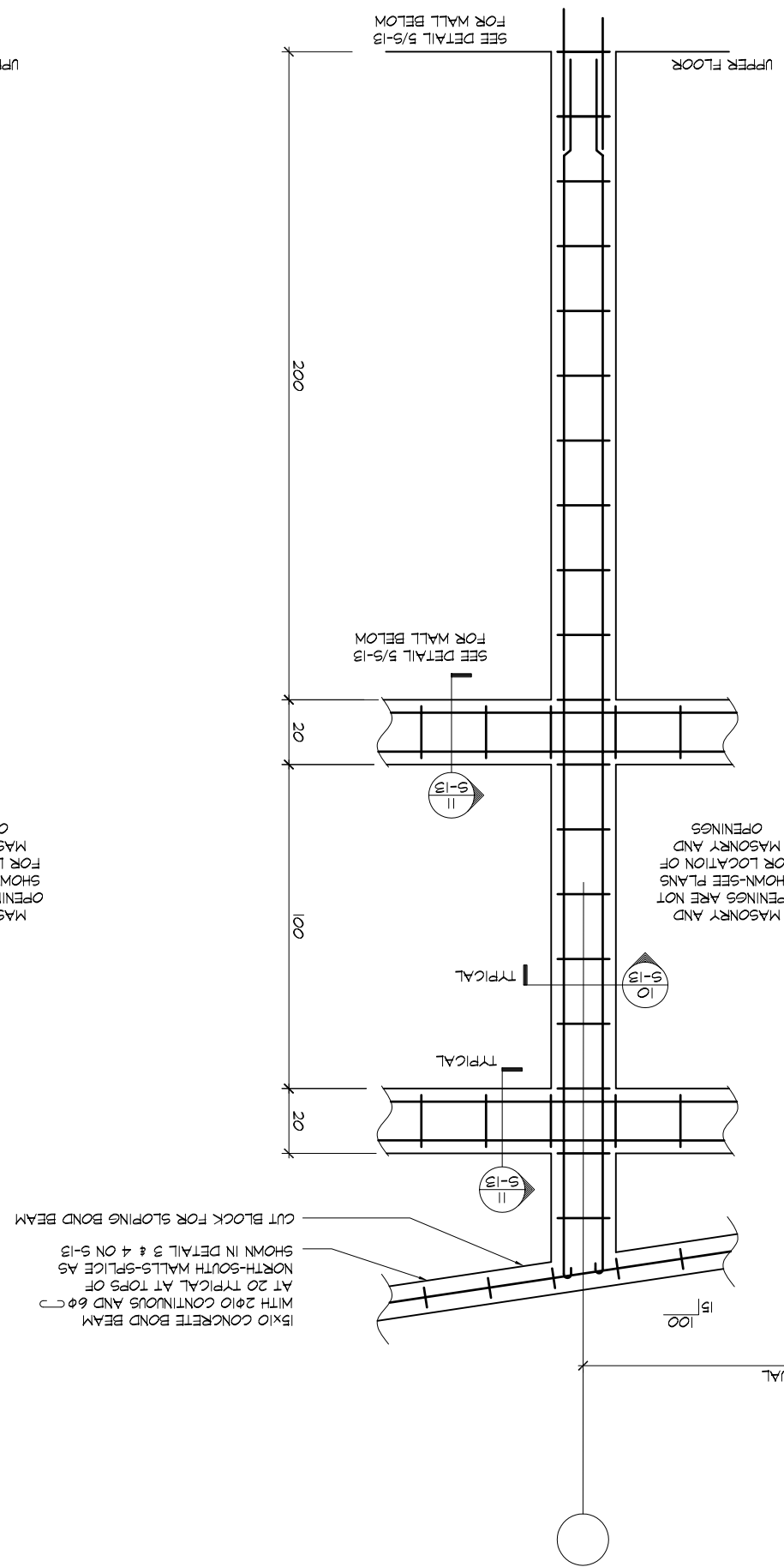


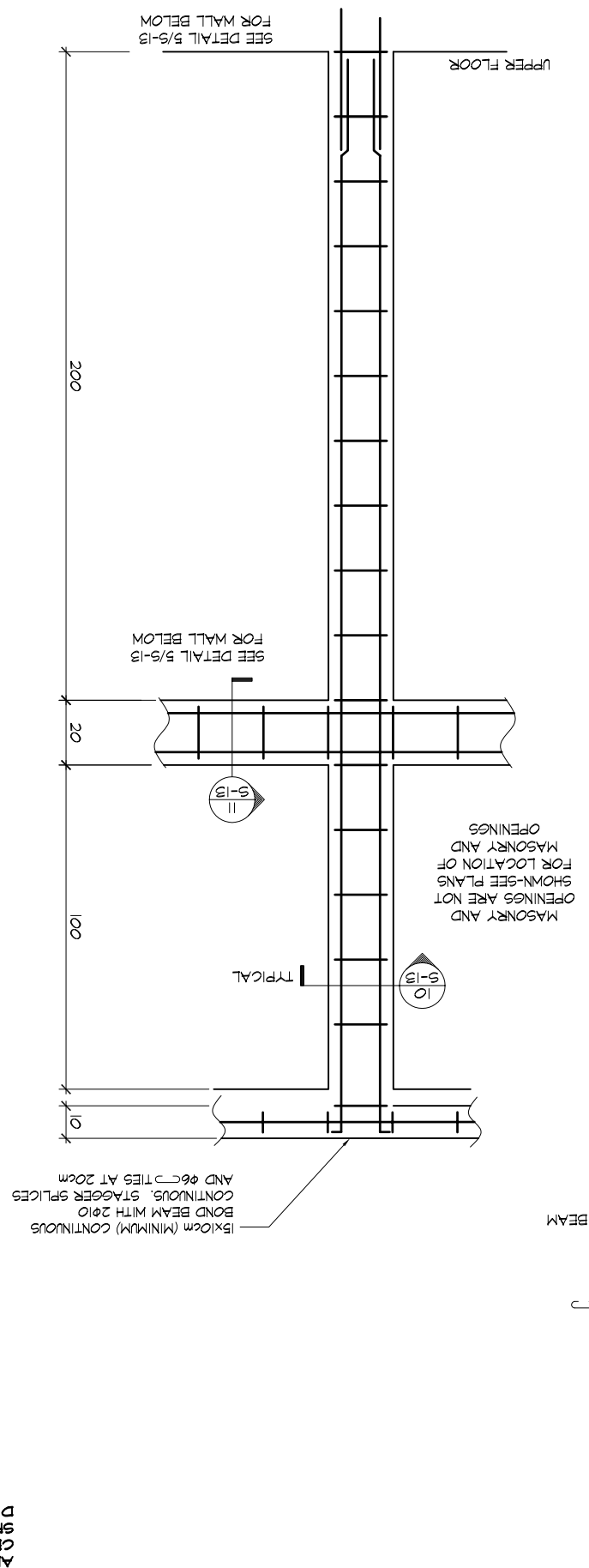
1 N-S WALL ELEVATION 1:20



2 N-S WALL ELEVATION 1:20



3 TYPICAL E-M WALL ELEVATION 1:20



NOTE:
ALL DIMENSIONS ARE IN CENTIMETERS UNLESS OTHERWISE SPECIFIED. ALL REINFORCING BARS DIAMETERS ARE IN MILLIMETERS.

S-14 SHEET NUMBER
5424 PROJECT:
DEC 2007 DATE ISSUED:

THE LORD'S HOUSE - PASSY, SENEGAL
WALL ELEVATIONS

... designing a world of hope
ENGINEERING MINISTRIES INTERNATIONAL
130 EAST KIOMA ST. STE 200 COLORADO SPRINGS CO 80903
PHONE: (719) 653-2078 FAX: (719) 653-2470 WWW.EMUSA.ORG