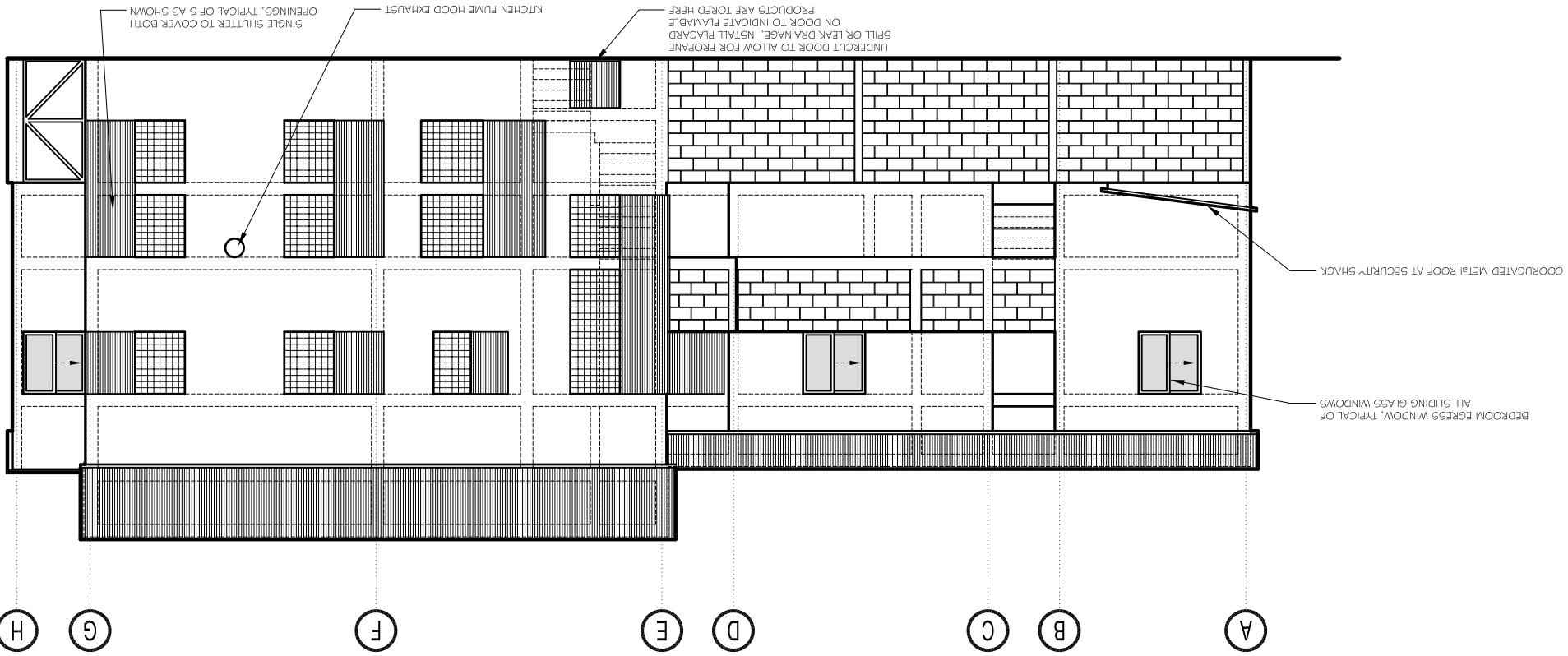


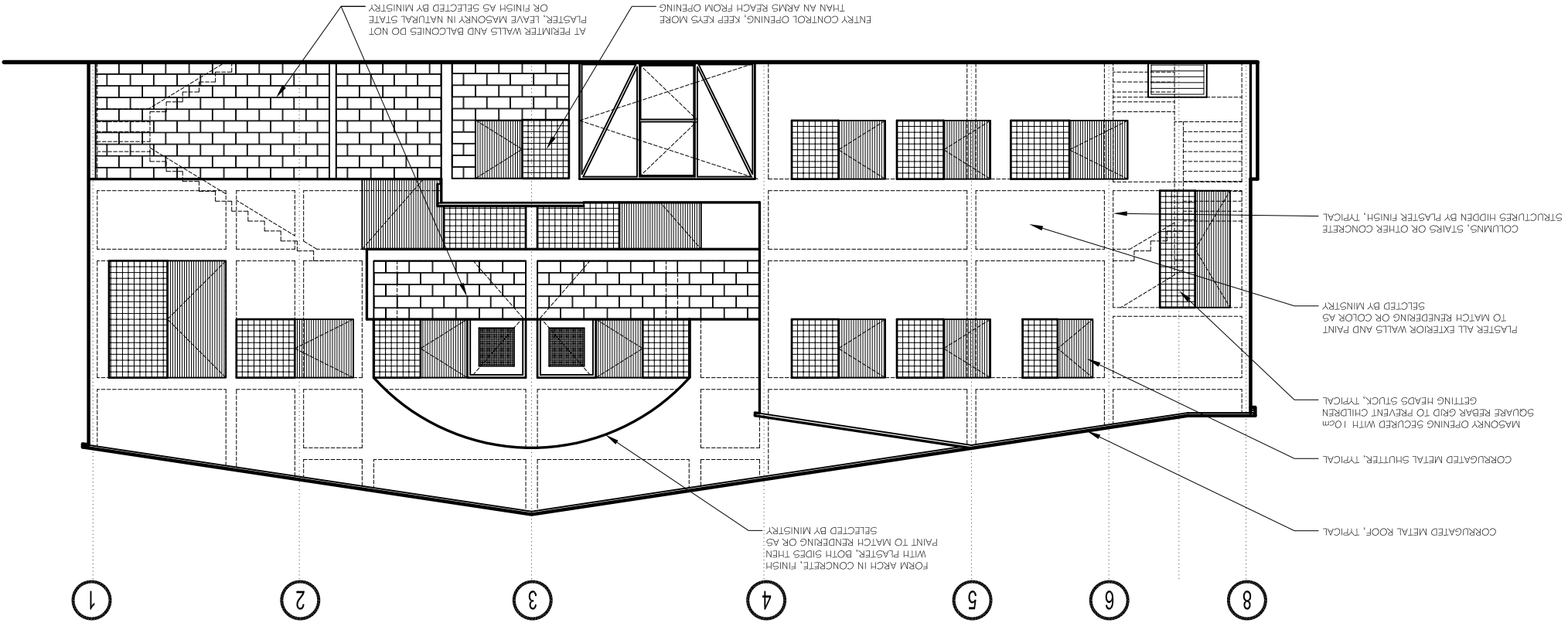
NORTHWEST ELEVATION

1:100



NORTHEAST ELEVATION

1:100



SHEET NUMBER
A-4
mm
1:100
SCALE:
5424
PROJECT:
DATE ISSUED:
MAY 2007

THE LORD'S HOUSE - PASSY, SENEGAL
NORTHEAST & NORTHWEST EXTERIOR ELEVATIONS

EM
... designing a world of hope
ENGINEERING MINISTRIES INTERNATIONAL
130 EAST KIOMA ST. STE 200 COLORADO SPRINGS, CO 80905
PHONE: (719) 633-2078 FAX: (719) 633-2970 WWW.EMUSA.ORG